

PSYC 332/3.0 - 2022 -Health Psychology

Professor Dean A.Tripp Dean.Tripp@queensu.ca

Zoom Virtual Office Hours Mondays 10:30-11:30am

Topic: Dean Tripp's Zoom office hours

Time: This is a recurring meeting

<https://queensu.zoom.us/j/94737130061?pwd=ZXlnSHltalJLMnUrWjJQVkhEWkw3QT09>

In-person office hours Mondays at 10:30-11:30am in my office at HUMPHREY HALL ROOM 326. If you are not in person we will stay virtual, using the link below.

Teaching Assistants:

Meghan Ford

meghan.ford@queensu.ca

Virtual Office Hours by
appointment

Krista Jones

14kmj1@queensu.ca

Virtual Office Hours: by
appointment

Megan Henkelman

megan.henkelman@queensu.ca

Virtual Office Hours: by
appointment

Classes:

Jan-Feb 2022 are Virtual OnQ

After Feb 28 2022 In-person; Mondays: Ellis Hall Rm 321; Thursdays: Humphrey Hall A100

Throughout this course, there will be opportunities for you to interact with your instructor, your teaching team (TAs, Lab Techs) and your classmates. Students will interact with their peers and have opportunities to learn from their colleagues during learning activities that include group meetings. You are expected to behave with integrity at all times both in and out of class.

Course Description from the Arts & Sciences Center: Key issues in health and health care require approaches embodying biological, psychological, and sociological factors. We must remember that for every CT scan, injection, or doctor visit, there is a person to be considered. This course explores a variety of health-related topics where psychology has a significant role (e.g., health promotion, stress, and coping).

Term Schedule at a Glance ^{**}Note that this schedule is subject to change

| Weeks | General Topic | Weekly Tasks |
|--|---|--|
| 13418 son - 8.08 04.08 9107 Week 1 LJ10-13 | First meeting Intro lecture on Dr Tripp's research | 1. Attend virtual class Monday 230pm: https://queensu.zoom.us/j/94413834430?pwd=NTdzSnpSNHdCcnhtNW5mMzRTNTYvQT09 2. Attend virtual class Thursday 4pm: https://queensu.zoom.us/j/91875983759?pwd=em8rUjQ5M2hYcThGVIFObXNWbmRXZz09 |

| Weeks | General Topic | WeeklyTasks |
|-------|---------------|-------------|
|-------|---------------|-------------|

1. Complete pre-

Group work
2

Week5
F7-10

Theories,
Models and
Interventions
Ch 8

Weeks

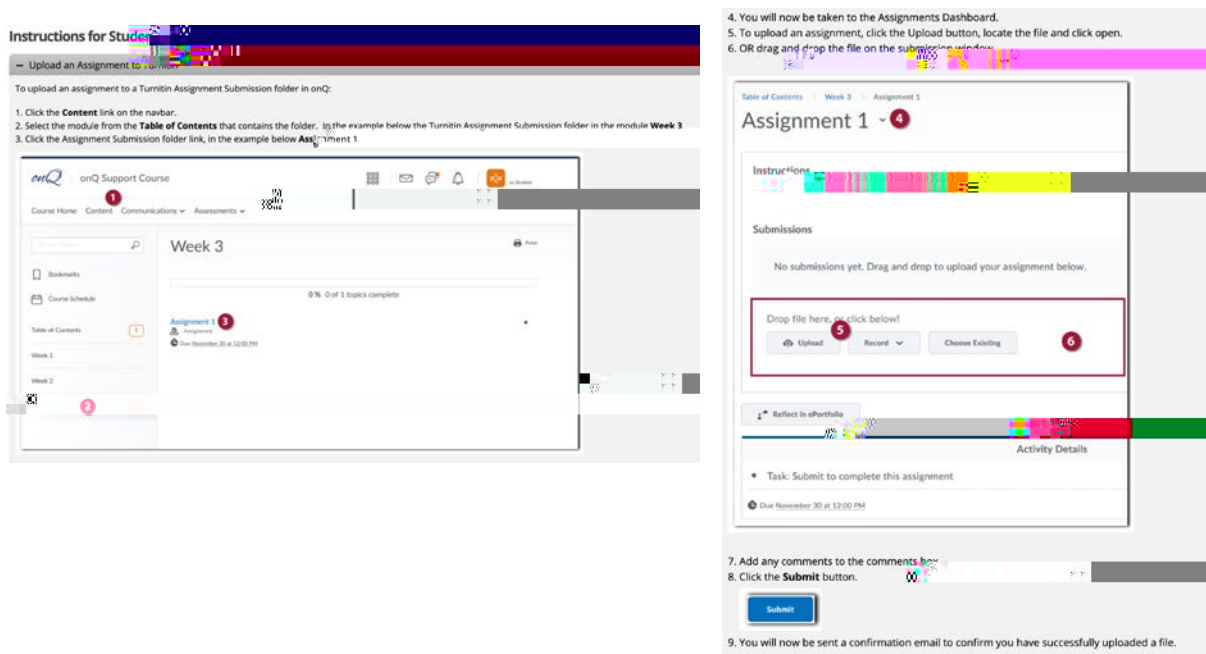
Plagiarism. At Queen's, consequences (or sanctions) of academic dishonesty include a written warning, completion of an educational program or workshop, submission of a revised or new piece of work, getting some or all marks deducted (mark of zero) on an assignment, a failing or zero in a course, suspension from the university for a period of time, or the taking away of a degree or degree in progress. These sanctions are determined by the nature of the act and the circumstances surrounding it.

IMPORTANT NOTE: All assignments for this will be subject to Turnitin

What is Turnitin? Turnitin is a text matching tool used at Queen's University. Students upload papers in order to receive originality reports that show text matches to the following sources: 1) Student paper repository, 2) Current and archived web site content, 3) Periodicals, journals, and publications

Turnitin's main tool is a "Originality Check", a text matching tool that presents results in the Originality Report. This is a common teaching tool used to evaluate plagiarism.

Please see instructions for use below: <https://www.queensu.ca/onqsupport/turnitinstudents0>



The widely acceptable Turnitin percentage is 15% and below. If you score higher than this it indicates plagiarism which will be cause for an academic review of the material in question. There is no universally specified similarity score (i.e., Turnitin score) because plagiarism policies vary with institutions. Anything less than 50% is good if well referenced and cited using the right referencing formats like APA, MLA and Chicago among others. Although the widely acceptable Turnitin percentage is 15% and below, **in this course the alarm score will be 20%**

Why is your Turnitin similarity index too high?

Turnitin highlights the similarities of your content to other sources; it doesn't determine if your paper is plagiarized, that is the assessor's prerogative. The assessor determines if the similar text is at

accurately and quoted correctly. The context is very important; however, Turnitin doesn't account for context.

In many cases, a high similarity index is usually due to either or a combination of the following:

1. Not crediting the source

You are copying every word from some other source without including the original words inside the quotation marks and including a citation about the source of the original text. Although you put the ideas from a particular source in your own words, you have not credited the source.

2. Paraphrasing too closely, although you credit the source

You can't take ideas from some other text, even if you put them into your words, and failing to cite the source. However, there is another kind of plagiarism when you paraphrase someone else's work.

When you put ideas and words in a different order from the original text and mix your words and the original words, you will still be plagiarizing, although you cite the source.

3. Using statistics from another person and not credit the source

Statistics, charts or tables inside a text are the property of whoever created them. And from this fact, you must credit the original creator in your text. There is an oratorical advantage when you cite the source because an author has reached statistics that support the claims which you have put in your paper gives strength to your argument.

4. Using photographs, images, maps or other devices of illustration without citing sources

The practice is similar to identifying a figure or a table. If you take someone else's photograph and place it in your text, and write a description, to make it apply to your paper and show a point you will be arguing without acknowledging the source is plagiarism. Even when you have taken a photograph, it is advisable to cite yourself since you are the creator, and the source will be clear to all readers.

5. Copying or buying someone else's paper or contracting the essay services to do your assignment. It is obvious that hiring someone to write your essay is plagiarism and copying someone else's work is equally bad. This brings into question the issue of safety when buying essays or from someone else. Copying some parts of a paper or the whole paper from old lab reports or old papers essay bank is a good example of this type of plagiarism.

6. Padding a reference list or bibliography, to show that you have researched when you haven't
This is academic misconduct that mostly happens when students don't complete their assignments and leave them till the last moment, especially when their professors have requested that they include various articles and books to their reference list.

How to reduce similarity on Turnitin for your essay?

You can decrease it by following these steps to make sure your essay is free of plagiarism:

1. Paraphrase your content

You have found information which suits your research paper, read it, and understand it then put it in your own words. Make sure you do not write above two words consecutively from the text word for word. In case you write above four words in a row, it is advisable to use quotation marks.

2. Cite your sources

Citing is the most effective way to avoid plagiarism. Follow the formatting guidelines of the document such as MLA, APA, or Chicago used by your college. Citing a quote is different from citing paraphrased material.

3. Properly use quotation marks

You must use quotation marks when you write a quote exactly as it appears from the source. No one likes to be misquoted. A scholar must be able to paraphrase most material effectively. The process takes time, but the efforts are rewarding. Quoting should be done well to be free of plagiarism allegations.

4. Referencing your sources

The most effective way of avoiding plagiarism is by adding a page of cited works or reference pages at the very end of a research paper. Also, the page should also meet the formatting guidelines of referencing used by your prof.

Course Evaluation:

| | | |
|------------------------|---|-----|
| 1) Midterm Exam | = | 30% |
| 2) Final Exam | = | 30% |
| 3) Group Meetings | = | 25% |
| 4) "What's your take?" | = | 15% |

1) EXAMS Total 60% Please see schedule for dates and times. There are two (Midterm and Final) exams weighed equally and worth a total of 60%, one of which will be during the Final Exam Period. All exams are ESSAY format you will provide a textbook based response to the essay questions of your choice and include another section that addresses the research component to the question (please see below part 2).

Note: During the exams there are no page limits to your essay question responses but you will have a time limit for the exam. Thus, you will need to monitor your writing time and spend adequate time on each response as you deem appropriate. APA format for the essays

might make good essay questions. What are the main topics of that chapter? Then rehearse a structure for your answer so you can describe and evaluate the “topic” in detail.

Part 2) **SUMMARY of Current Research article:**

Group Module Format: Instructions describing the task for the upcoming module will be posted on Q for all group meetings

Step 1 You are to complete the pre-meeting task and submit it before the time that it will be reviewed in your group. This reflection is to be submitted using the OnQ system. **The prework should be a maximum of one page**, double spaced, with one inch margins, and Times New Roman, size 12 font. A title page is not necessary. Do not include your name, the date, Dr. Tripp's name, etc. at the top of your paper. That information is already available with your submission to OnQ.

NOTE *** If the written part of the assignment is not one page, you will be penalized 5%. (If your name, the date, etc. are included at the top of the page, you will be penalized 15%.) (Anything written in excess to one page will not be read. The prework is due at the commencement of your group time for that particular meeting.

Reminder: Late submissions will not be accepted and will receive a mark of 0.

Note: I always refer to a "recent or current article" meaning one that has been published in the last year (i.e., 2021-2022). This time frame should apply to almost every research topic I can think of. If for some reason you are having trouble finding current research on the subject then reach out to the library (as described below) or ask one of your TA's for assistance.

Note: You are marked on your use of APA edition referencing in the pre-labs and the lab work. Please use APA citations and have a properly formatted Reference section at the end of your assignment. The Reference section should be on a separate page from your pre- or group write up and does not count in the page limit

Step 2 You are responsible for attending the virtual lab class on Zoom (and in-person meetings in March) with the class and be prepared to take a turn discussing your work and the article you have selected for the task.

TIP. Many previous students start a google doc for this meeting where they can write in, add, change, the document as the flow of the discussion is occurring. It is useful to have one or two people active on this document throughout the meeting.

TIP. Overall, students in past years have done a good job locating empirical resources and summarizing results. The vast majority of lost marks for both the individual and group work came from (1) going over the page limit or (2) incorrect APA formatting. These can be prevented in future assignments.

Common APA errors included:

Incorrect use of "et al" (not using it at all, or using it prematurely)

Not providing page numbers if using direct quotes

Liberal paraphrasing. (Remember to put things into your own words!)

Omitting journal names/volume/issue/page numbers, using journal ~~shorts~~

Incorrect formatting (e.g., not double spaced, not tabbed correctly, incorrect capitals, incorrect italics)

Surname, I., & Last Name, F. (YYYY). Article title: Watch your capital Journal Name, 1(2); 1-10. DOI

WATCH OUT! Copying/pasting over an APA citation from Google Scholar (etc.) does not mean the citation is complete or formatted correctly. Take ten minutes and go over your citations with a fine tooth comb!

There are some excellent online resources for learning APA, such as OWL (Purdue University). The Queen's Writing Centre is also a good resource if you need further assistance.

3) "What's your take?" [15% - Each of the 5 out of 6 best assignments are worth 3%] You must submit the completed assignment to onQ by Friday of that week before midnight - 11:59 pm

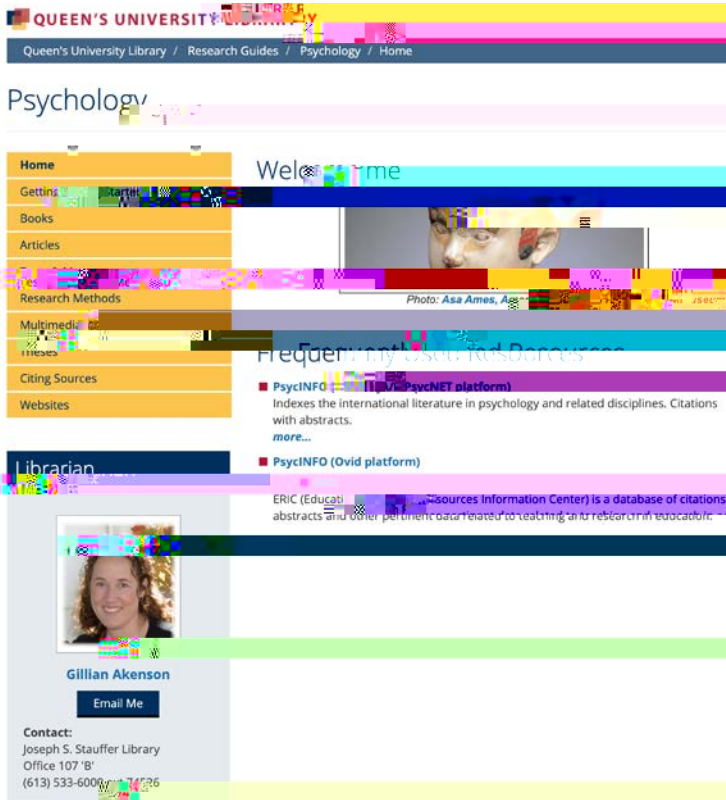
The 6 "What's your take?" research assignments are worth 15% of the final grade and are listed in the class schedule. Only your 5 highest grades will be used to calculate this total. That means if you miss one for some reason, you are OK. If you miss multiple your grade will suffer. **Each "What's your take" assignment will have a deadline to be submitted. If you do not meet these deadlines you will not receive credit for that work.**

Assignment Format Instructions that describe your task for the assignment will be provided in the lecture and on onQ

previously and how you feel about the topic, or based on some combination of these bases. Basically, it is a reflection of the science and the issue and how you feel about it?

A

3) You can also visit this website from our library Gillian Akenson is a great resource for those of you unsure how to conduct article reviews. <https://guides.library.queensu.ca/psychology>



MISSING AN EXAM: Students will be excused from an Exam for documented medical or compassionate reasons. These would include situations such as major illnesses, accident, or a death in the family. You must contact both the professor and the teaching assistant as soon as you become aware you will miss an Exam and you must provide your documentation ASAP. Only students who provide written documentation (e.g., physician's note) will be exempted or allowed to rewrite an Exam. Students who are exempted from an Exam for an approved reason may have their remaining Exam(s) reweighted; such options will be discussed with the professor. Students who are not able to meet the criteria of written documentation, timely provision of documentation, or alerting the professor and teaching assistant before the said exam may receive a grade of zero for a missed Exam.

The final Exam will take place in the final examination period, as specified in the University regulations governing examinations (see the Faculty of Arts & Sciences Calendar). No reference or supplementary material will be allowed (unless specified by your professor)

Students who cannot write an exam during the December or April exam period due to a serious, extenuating circumstance (with the supporting documentation required as outlined above) must be available to write a deferred exam during the Psychology Department's Make up Exam period

Please see the following webpage under “Exam Absence” for additional information: <http://www.queensu.ca/psychology/Undergraduate/psycdepartmentalpolices.html>

NOTE..The exams are not cumulative. You are examined on the assigned readings and lecture content occurring before the date of the exam as listed on the schedule

In this course, some components will be graded using numerical percentage marks. Other components will receive letter grades, which for purposes of calculating your course average will be translated into numerical equivalents using the Faculty of Arts and Science approved scale:

Arts & Science Letter Grade Input Scheme

| Assignment mark | Numerical value for calculation of final mark |
|-----------------|---|
| A+ | 93 |
| A | 87 |
| A- | 82 |
| B+ | 78 |
| B | 75 |
| B- | 72 |
| C+ | 68 |
| C | 65 |
| C- | 62 |
| D+ | 58 |
| D | 55 |
| D- | 52 |
| F48 (F+) | 48 |
| F24 (F) | 24 |
| F0 (0) | 0 |

Your course average will then be converted to a final letter grade according to Queen's Official Grade Conversion Scale:

Queen's Official Grade Conversion Scale

| Grade | Numerical Course Average (Rang |
|-------|--------------------------------|
|-------|--------------------------------|

| | |
|----|--------------|
| A- | 80-84 |
| B+ | 77-79 |
| B | 73-76 |
| B- | 70-72 |
| C+ | 67-69 |
| C | 63-66 |
| C- | 60-62 |
| D+ | 57-59 |
| D | 53-56 |
| D- | 50-52 |
| F | 49 and below |

Academic Integrity Policy Queen's students, faculty, administrators and staff all have responsibilities for supporting and upholding the fundamental values of academic integrity. Academic integrity is constituted by the five core fundamental values of honesty, trust, fairness, respect and responsibility (see www.academicintegrity.org) and by the quality of courage. These values and qualities are central to the building, nurturing and sustaining of an academic community in which all members of the community will thrive. Adherence to the values expressed through academic integrity forms a foundation for the "freedom of inquiry and exchange of ideas" essential to the intellectual life of the University. Students are responsible for familiarizing themselves with and adhering to the rules concerning academic integrity. General information on academic integrity is available at Integrity@Queen's University, along with Faculty or School specific information. Departures from academic integrity include, but are not limited to, plagiarism, use of unauthorized materials, facilitation, forgery and falsification. Actions which contravene the regulation on academic integrity carry sanctions that can range from a warning, to loss of grades on an assignment, to failure of a course, to requireme to withdraw from the university.

Academic Misconduct Academic misconduct is an act by a student, or by students working on a team

Queen's University is committed to achieving full accessibility for persons with disabilities. Part of this commitment includes arranging academic accommodations for students with disabilities to ensure they have an equitable opportunity to participate in all of their academic activities. If you are a student with a disability and think you may need accommodations, you are strongly encouraged to contact Student Wellness Services (SWS) and register as early as possible. For more information, including important deadlines, please visit the Student Wellness website at: