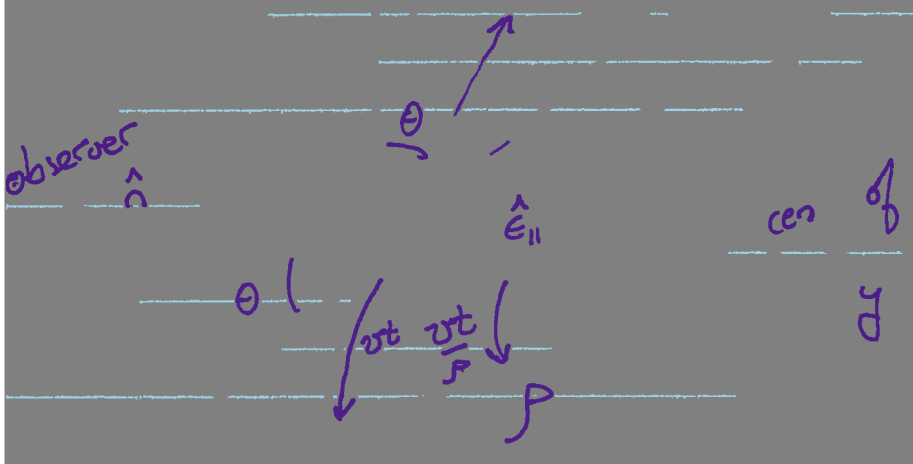




z



we  $\rho$  is radius of curvature of circular arc

$\theta$  angle

observer is in  $xz$ -pl

$$\hat{n} = \cos\theta \hat{x} + \sin\theta \hat{z}$$



---

$$\omega \lesssim \omega_c$$

$$\omega \gg \omega_c$$

$$\gamma \theta$$

2

$\xi \ll 1$

$\xi \gg 1$

$$\omega = \frac{\omega}{3c} \left( \frac{1}{\gamma^2} + \theta^2 \right)^{3/2}$$

we obtained is  
from hand way  
gu

low frequency limit  $\xi \ll 1$  for  $\theta = 0$

critical 'c' found at  $\xi = 1$

---

